



外高桥保税物流园区解决方案

Shanghai Kondo International Logistics Service Co., Ltd.

2009-8-21

内容

- ◆ 概述
- ◆ 操作模式
- ◆ 关于控道

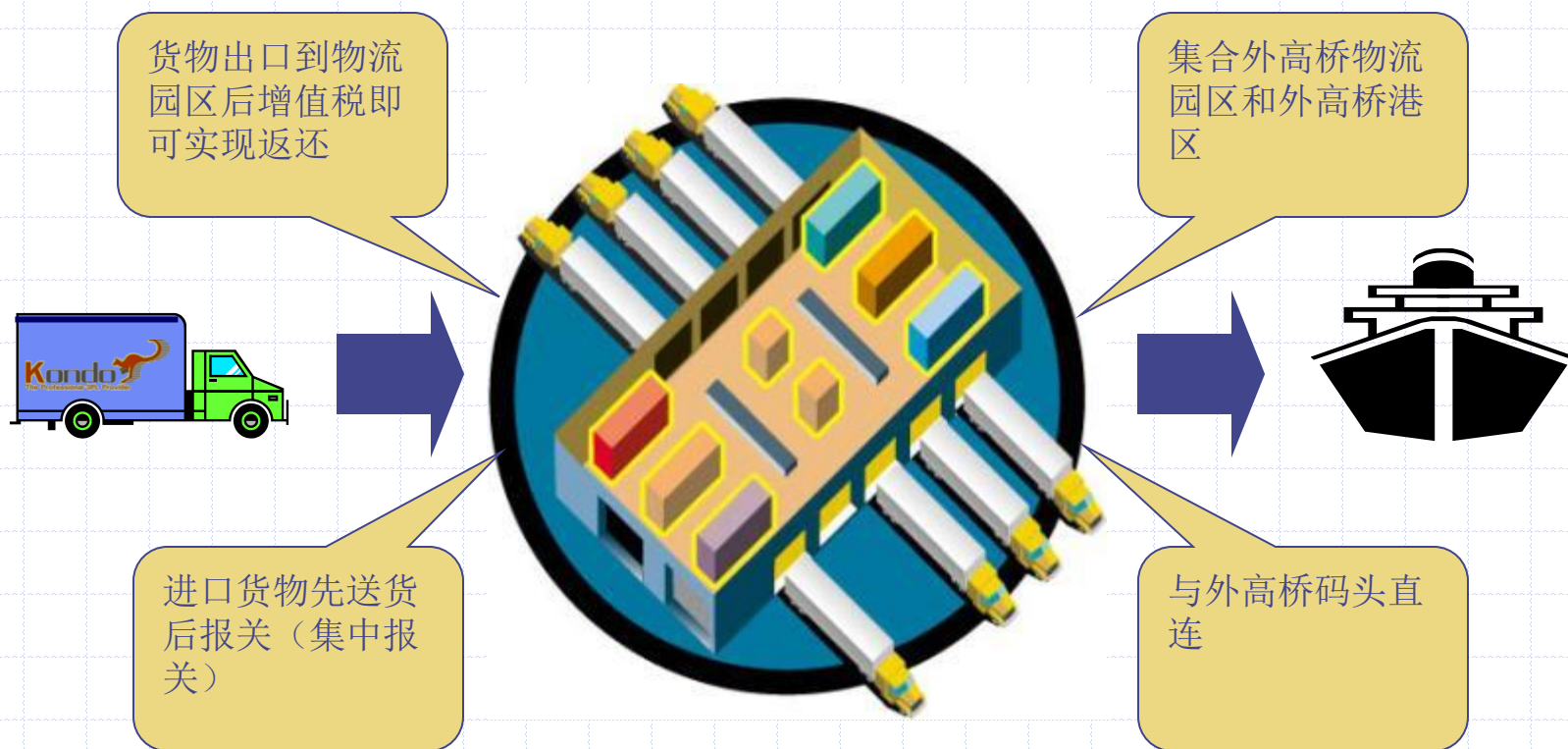
位置



布局



特权



外高桥物流园区规章制度

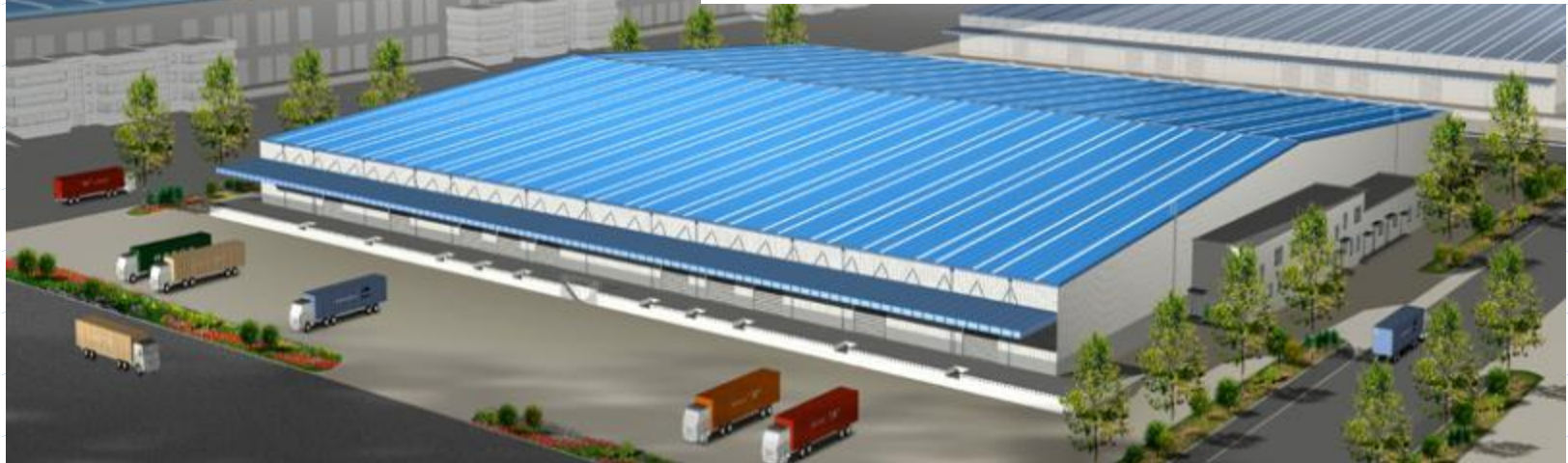
Circulars for Logistics Parks Issued at State Level

Authority	Circular	Key Contents
State Council	Guobanhan[2003]81	Approval on WGQ LP and the main policies
	Guobanhan[2004]58	Approval on the other 7 LPs
SAT	Guoshuifa[2004]117	Tax treatment in LPs
GAC	Circular[2004]10	Customs treatment in LPs
SAFE	Huizongfu[2004]63	Forex treatment for purchase of goods from LPs
	Huizongfu[2004]57	Forex treatment for non-trade items in LPs

Circulars for LP Issued at Shanghai Level

Authority	Circular	Key Contents
Shanghai Government Authorities	Hufuban[2004]17	Policies in WGQ LP on customs, inspection, tax, forex and other administrative matters

控道仓库

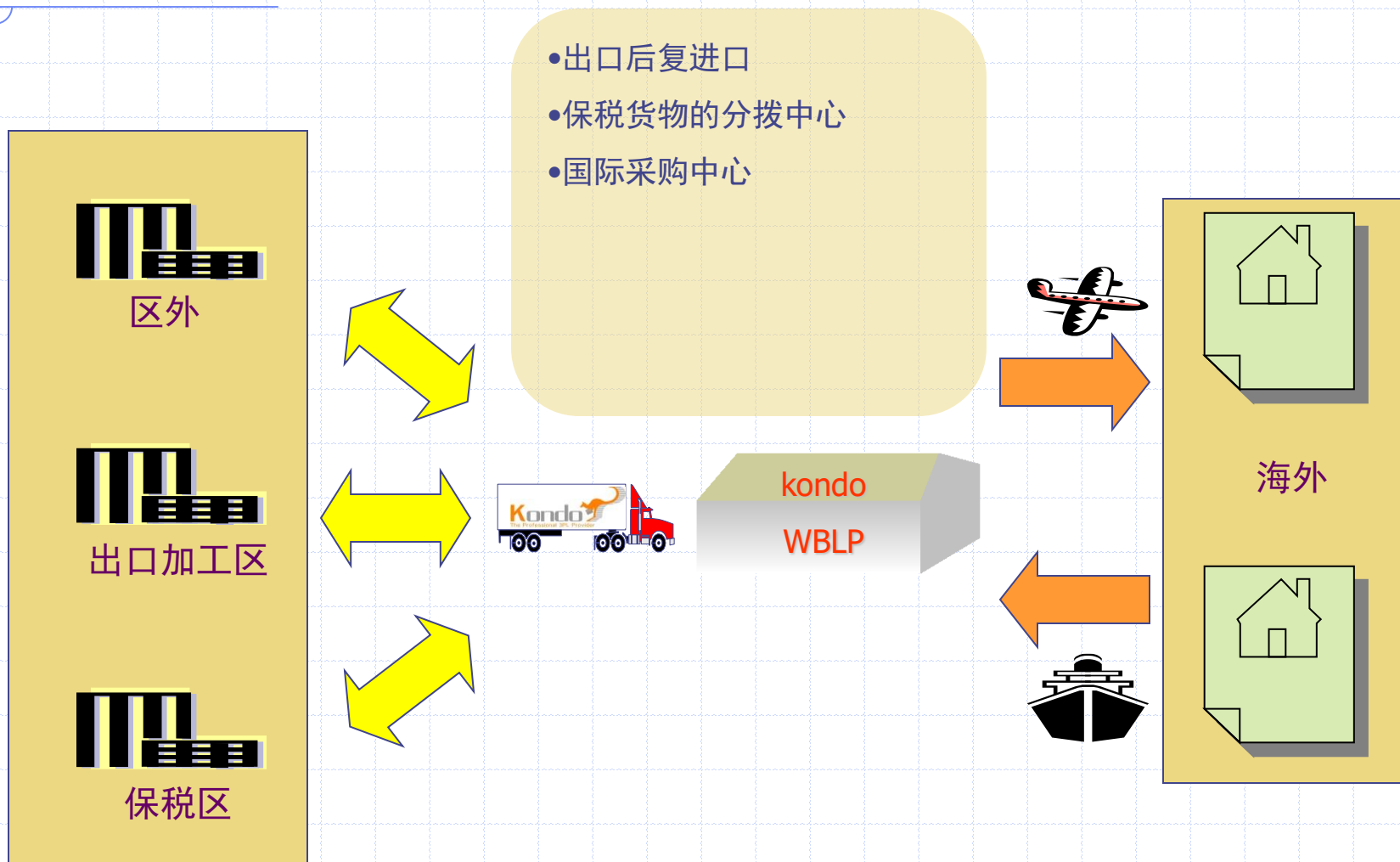


Kondo logistics in WBLP
Warehouse area: 3000 M²

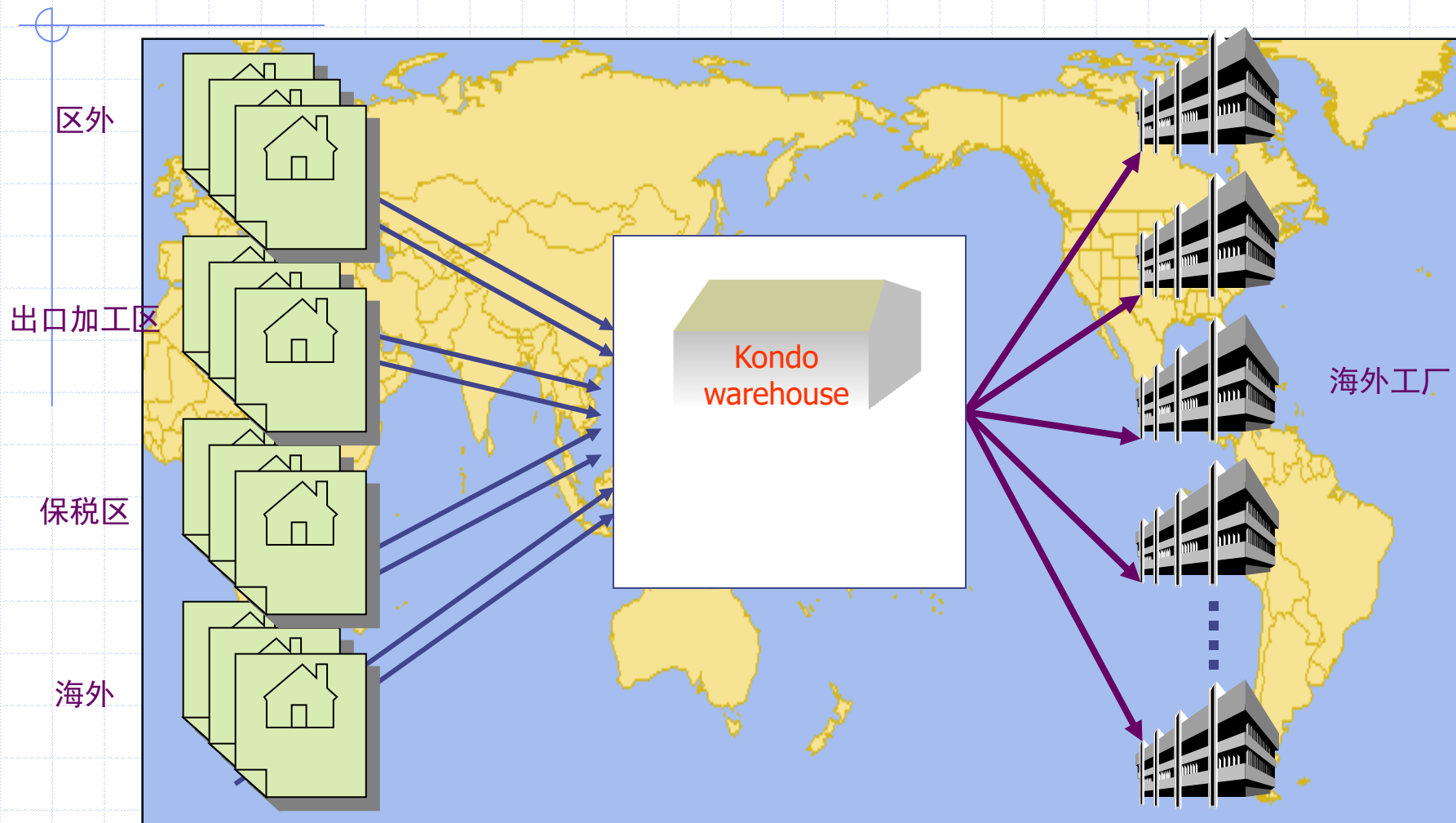
内容

- ◆ 概述
- ◆ 操作模式
- ◆ 关于控道

操作模式



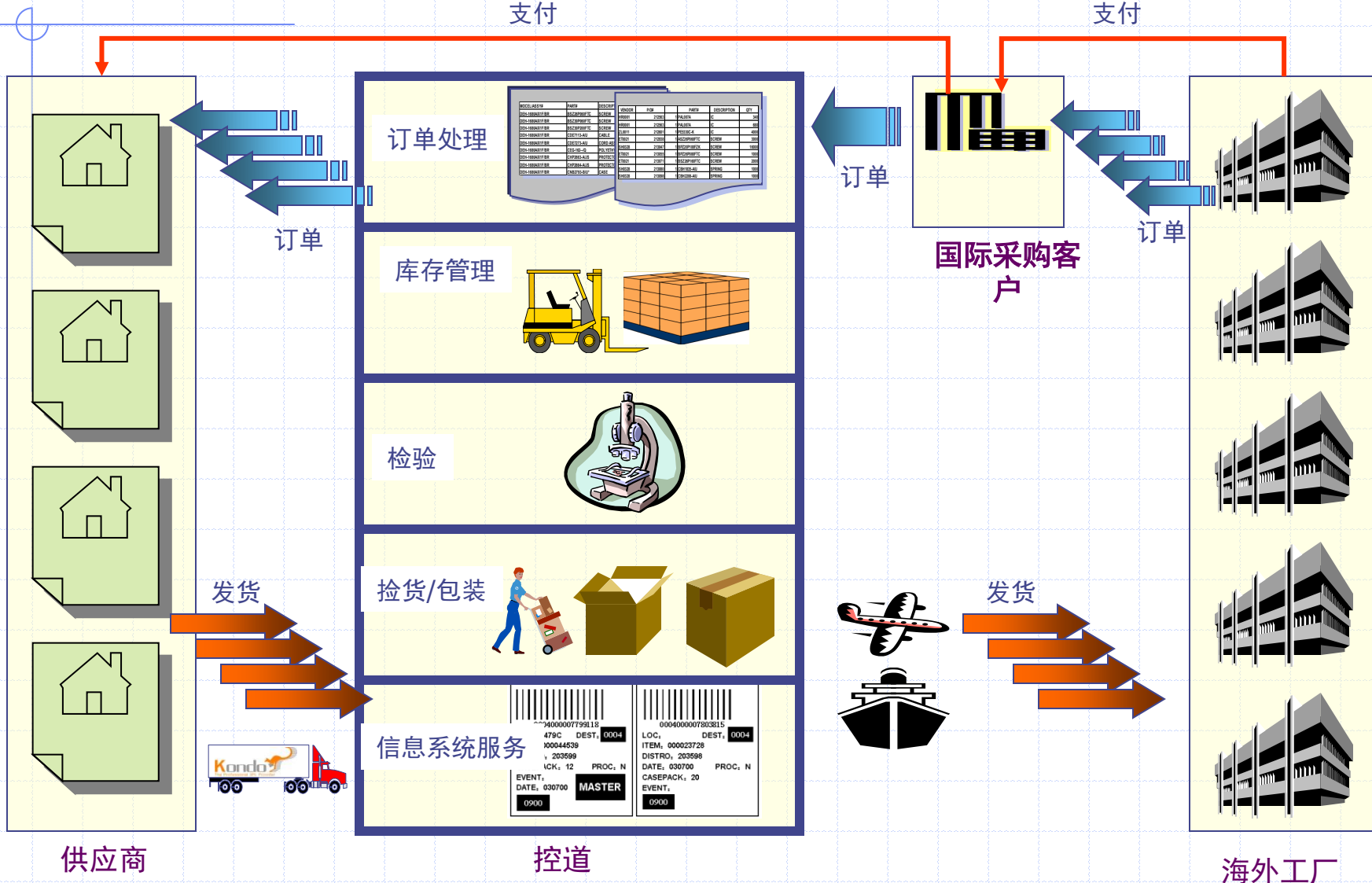
国际采购案例分析



国际采购服务

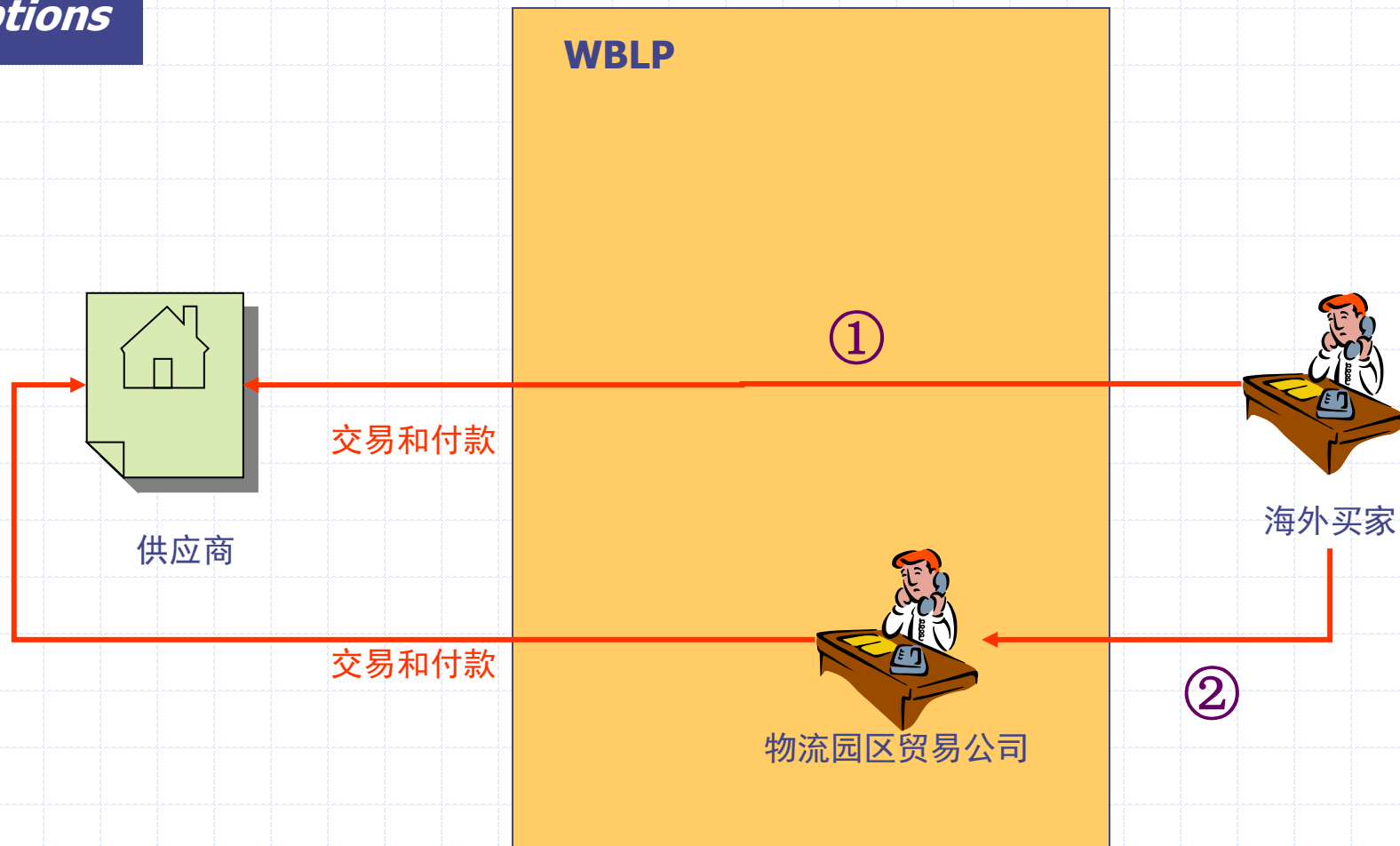
支付

支付

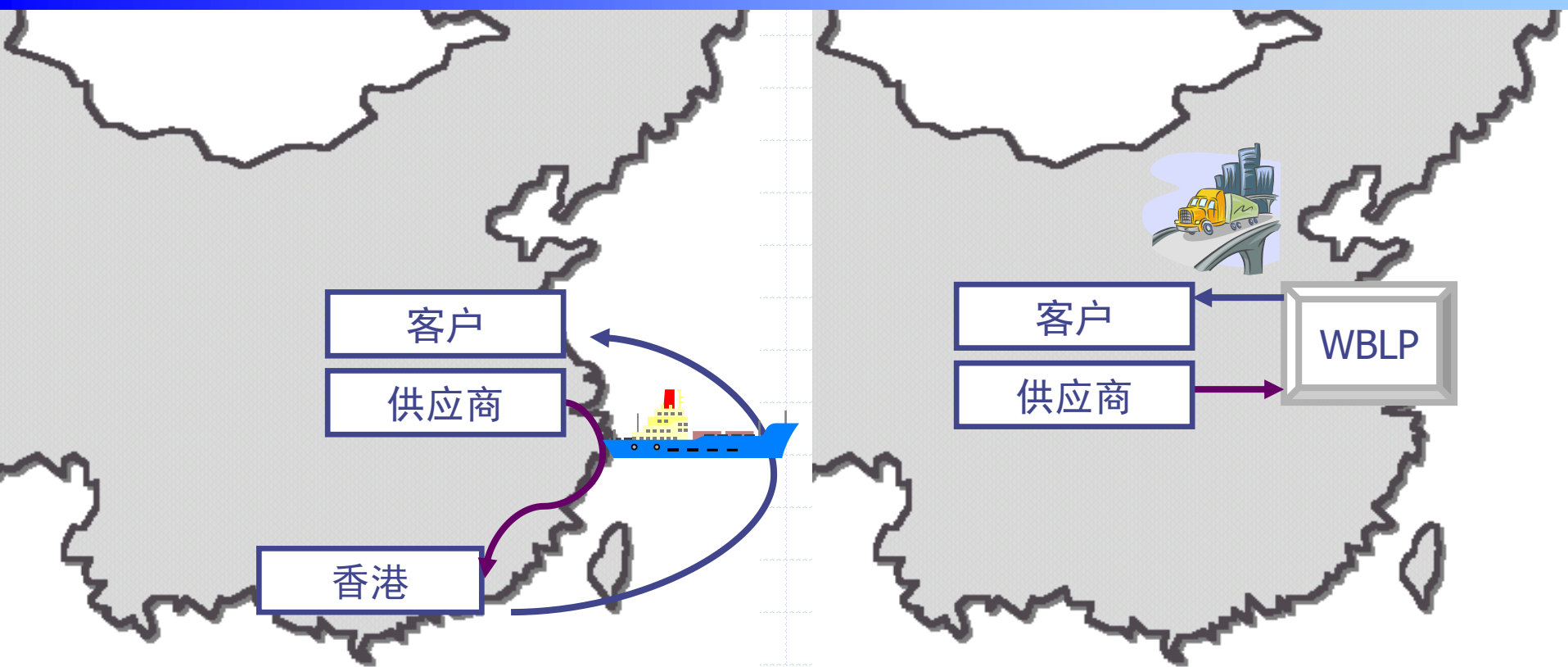


交易和付款

2 options



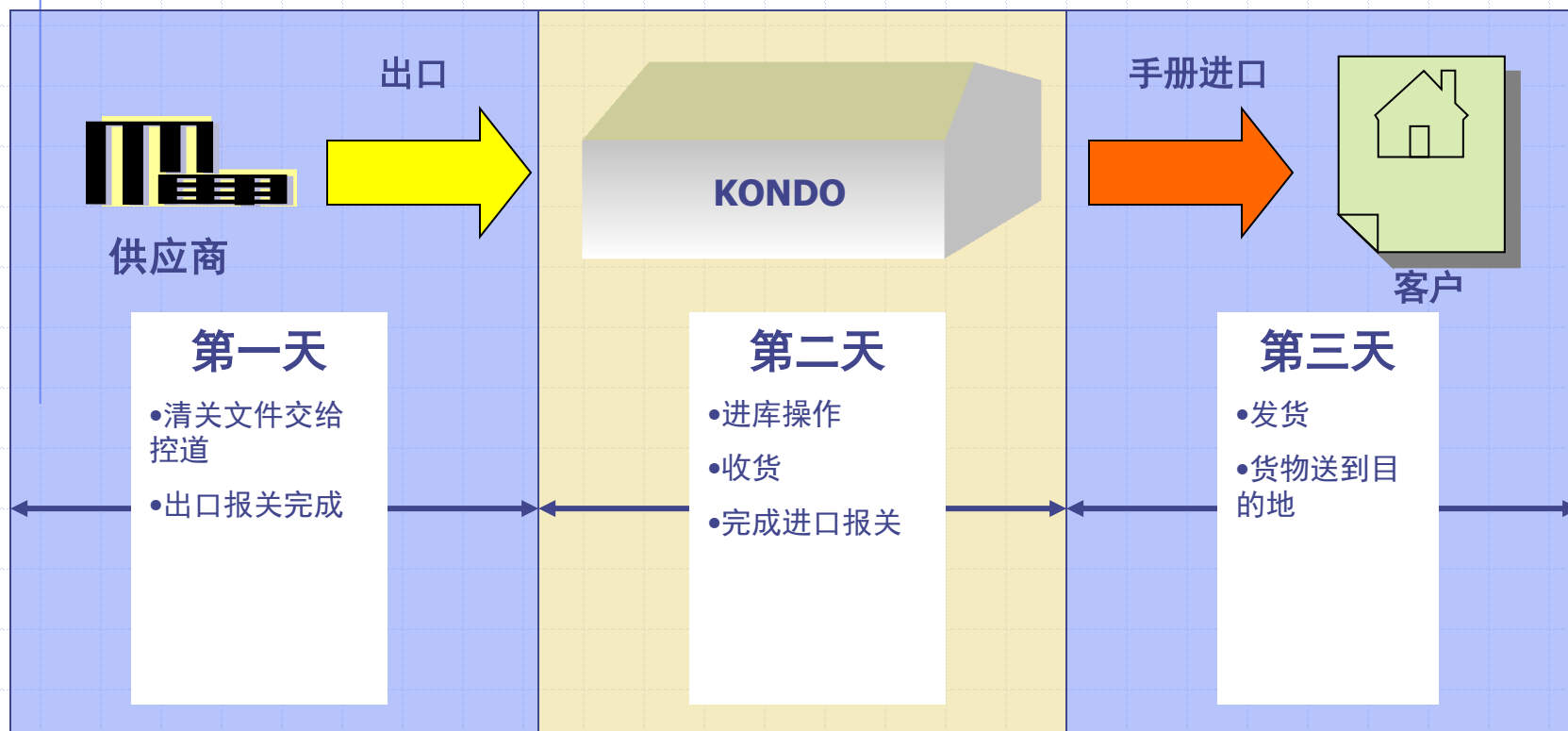
出口和复进口案例分析



传统模式需要2周时间

整个过程仅需3天，成本减少60%

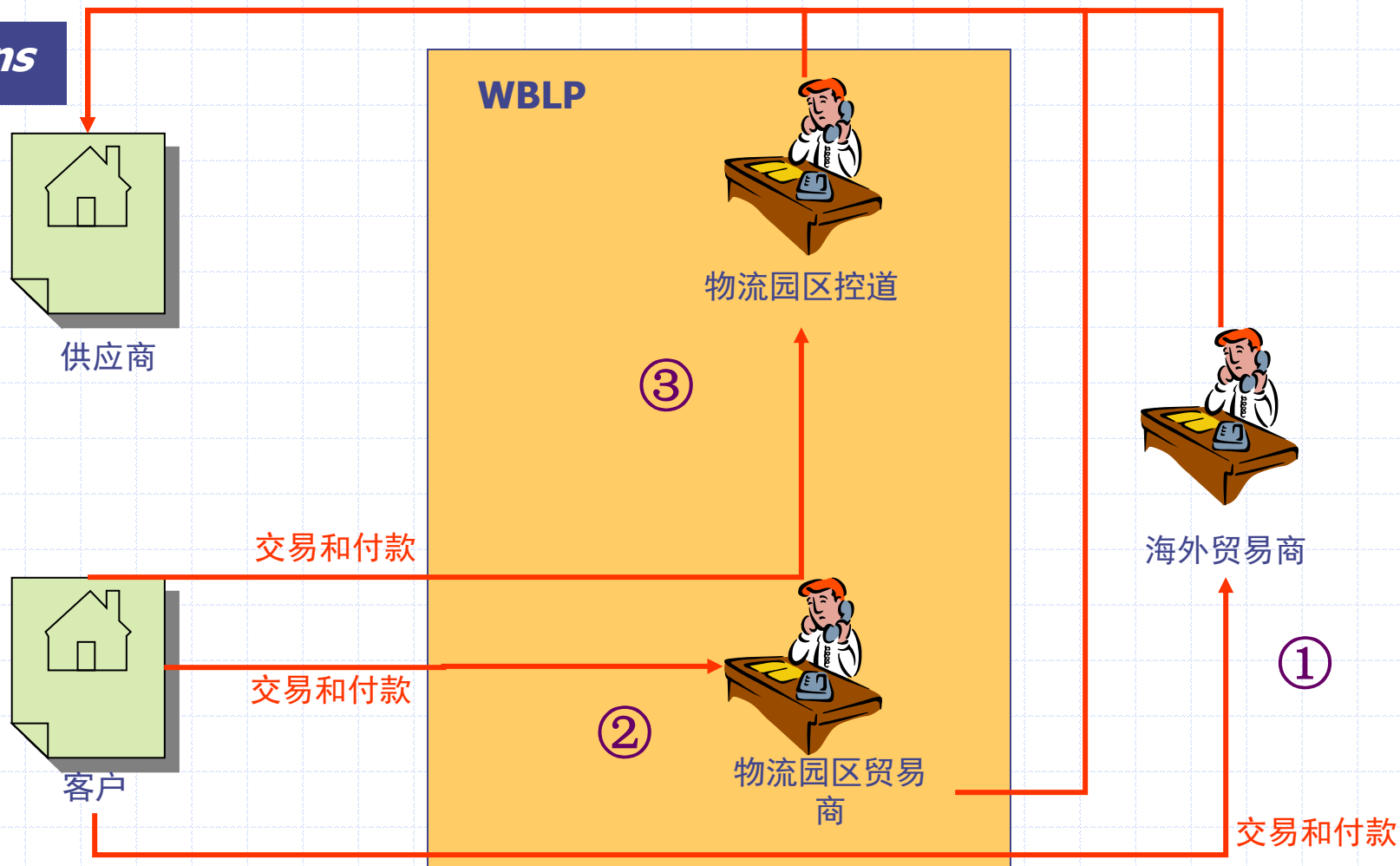
流程图



整个过程仅需3个工作日

交易和付款

3 options



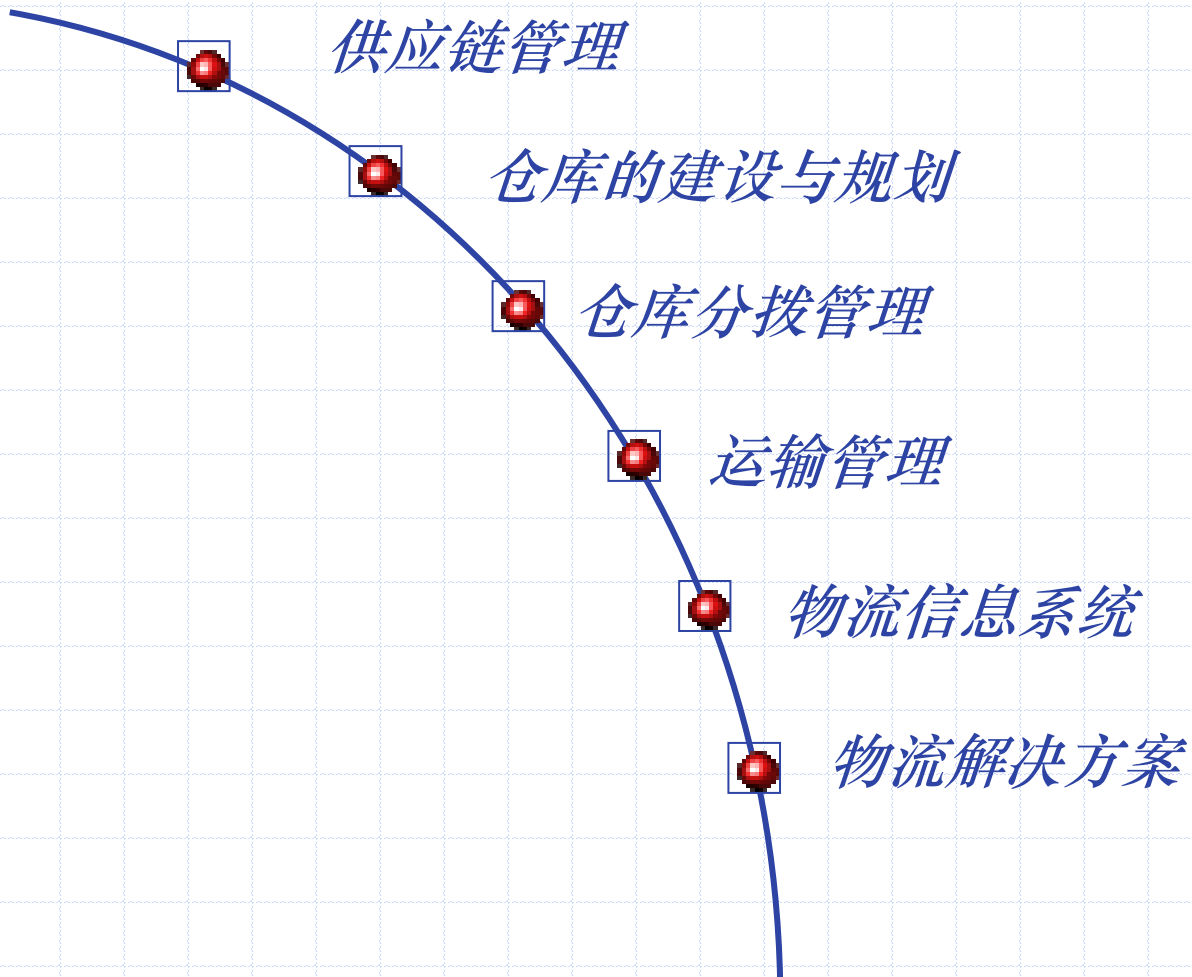
内容

- ◆ 概述
- ◆ 操作模式
- ◆ 关于控道

服务理念

控道志在以及时、高效、周到的服务理念，通过 **Internet** 网络以及电子信息技术来为客户提供综合的第三方物流服务，我们立志成为全球供应链管理的专家。

我们的服务



主要客户



Talk To Kondo, Your Professional 3PL Provider

